

# GUIDING TOUR GROUPS

Occasionally, when our docents are unavailable, teachers, aides and parents may be called upon to guide school group tours through Trail End. The following information should help teachers & other adults prepare for the tour, making it enjoyable and comfortable for everyone concerned.

## INTRODUCTION

Generally, tours will begin with an introduction in either the foyer or on the front steps. This will be given by Trail End personnel. The introduction will provide an overview of Trail End:

- Who built Trail End and when
- How long it took to build the house
- Who lived there and for how long
- What its current use and purpose is

It should be noted at this point that Trail End was built at a time in American history when new conveniences were being offered to the public for the first time, many of them a result of the harnessing of electrical power. Some of these conveniences are in Trail End and they will be pointed out during the tour.

## LIBRARY

- Books on shelves, although not originals; are similar to what people read when the family lived here: history, fine literature, poetry, etc.
- Senator Kendrick used this room as office; had large chair next to fireplace and desk by window.

## DRAWING ROOM

- Talk about drawing room at library doorway.
- Drawing room is like today's living room, without television or other electrical devices; for entertainment, people either read or played games like charades, whist and bridge; they also enjoyed musical presentations and theatrical skits.
- Room also used for more somber purposes such as family funerals (both John and Eula).
- Point out 1924 portraits of John and Eula Kendrick.

## POWDER ROOM & CLOAK ROOM

- Powder room, used by guests, was one of twelve bathrooms in house.
- Porcelain wall tiles, ceramic floor tiles, and marble trimmed windows.
- Cloak room was exactly what it sounds like: a place for cloaks and coats.

## FOYER

- Point out hand-painted ceilings, machine-tooled woodwork, Edison phonograph and electric lighting.
- Discuss impact of electricity on both manufacturing and private homes.
- Ask what the room tells them about the people who lived at Trail End.
- If you have physically disabled individuals in your group, escort them to the elevator. Ask them (and an adult escort) to take the car to the second floor and meet you at the top of the stairs.

## STAIRWELL

- Lead group up main staircase to first landing. Point out replication wallpaper. Explain that after nearly eighty years of strong sunlight, original wallpaper had faded so much that bright green oak leaf pattern was no longer visible. In addition, there was extensive damage to plaster, requiring paper's removal.
- Paper now in place based on original pattern; samples of original paper and new paper are on windowsill.

## **FAMILY BEDROOMS**

- First door on left is Manville's bedroom, full of memorabilia from his years at Harvard University.
- Second door on left is master bedroom, full of original furnishings. If asked, explain that it was not uncommon during the time the Kendricks lived here for husbands and wives to have separate beds.
- Point out wallpaper; explain that Mrs. Kendrick had the room redecorated in the 1930s or 1940s.
- Across hall is Rosa-Maye's bedroom, also full of original furnishings. Discuss "pink girliness" of room and how it conflicted with Rosa-Maye's tomboy behavior.
- Other door on right is maid's closet, containing parts to in-house vacuum system. This is a good time to talk about this unit and expand on the family's use of modern technology. Have them look for outlets as they go through remainder of house.
- Be prepared to offer information and answer questions about family members as students look into these four rooms.

## **GUEST WING**

- As you leave south wing, gather group on second floor landing. Position yourself on first or second step up so that everyone can see and hear you clearly.
- Note that wall behind them was used by family as portrait gallery, with signed photographs of presidents, senators and other dignitaries as well as family members.
- Books on shelves below, although not original Kendrick books, are representative of the kind of fiction a family would read in the days before television. If you have time and students seem interested, ask them to look at titles and see if any look familiar.
- At end of hall, on both sides of elevator doors, are original guest bedrooms, now used as offices. These are closed to public now, but after Manville's marriage, he and his family used the rooms as their "apartment."
- Any physically disabled members of group should enter elevator and go to the third floor; ask them to meet you in the ballroom.

## **BALLROOM**

- While climbing stairs to the third floor, tell group they are about to enter the ballroom. Ask them to please not run about or sit on benches.
- Once assembled, tell group that room started out as playroom for the children, but since the kids were teenagers by the time the house was finished, the playroom soon became a ballroom.
- Point out the musicians' loft and Edison phonograph; listen for period music.

## **STAFF QUARTERS**

- Before leaving ballroom, assemble group near piano and explain swinging window system (for ventilation).
- Warn about step down into staff quarters.
- There were three bedrooms, two currently furnished (one for cook, other for maid).
- Make sure you mention that only women lived in these rooms. Any men employed here had rooms in basement.
- Bath at end of hall was shared by those who lived here; it included same marble, porcelain and ceramic as family baths on second floor.

## **HALLWAY**

- Before heading down the back stairs, gather students near telephone and fire extinguisher at end of hallway. Discuss technology and labor-saving devices visible from this spot:
  - Electric lights
  - Indoor plumbing (sink)
  - Elevator (shaft original)
  - Intercom
  - Fire hose (never used)
  - Dumbwaiter and laundry chute
  - Modern telephone
  - Modern fire extinguisher

## **BACK STAIRS**

- Lead group down back stairs, allowing second adult to follow up group. (If group includes physically disabled individuals, ask them to take the elevator to first floor and meet you by back door near kitchen.)
- Ask everyone to use handrails.
- On way down, point out west balcony converted to playroom for Manville's children in 1930s.
- Point out dumbwaiter, laundry chute and fire hose again.

## **BACK BEDROOM**

- West bedroom on second floor is used as a library/research room. Although open, this room will not be included in most tours.
- Used to be called the "blue" room. Later converted to nursery for use by Manville's two sons.
- Light fixtures and most hardware original.
- When finished, continue down back stairs to kitchen.

## **KITCHEN**

- Explain what typical ranch kitchen was like (such as the one at the OW ranch): hot, small, dirty and dark. Trail End's "hospital white" kitchen eliminated many of these concerns:
  - Cool: Heat from wood/coal cookstove would build up and heat entire house if not sent elsewhere; good in winter, bad in summer. Kitchen located on cool north side of house; windows opened at top to let out rising hot air; doors closed to prevent heat from going to rest of house; porcelain walls stayed cool even in summer.
  - Large: Enough room for several people at a time to work together comfortably.
  - Clean: All surfaces easy to clean including porcelain walls, ceramic floors, enamel painted wood cabinets and doors, marble window and door trim, ceramic counters, porcelain and German Silver sink.
  - Bright: White finishes reflected light back into room; electric light provided night illumination.
- Mention that original stove was later replaced by gas unit, indication that family took advantage of technological advances as they became available. Original stove returned to house in 1980s.
- Note pass-through window to butlers' pantry; not only is it a good transition to that room, it shows how cook got food to dining table without opening doors and letting out all the heat and smells of cooking.

## **BUTLER'S PANTRY**

- Because it is narrow, it is very difficult to talk about the butlers' pantry while everyone is in room; easiest way is to position yourself near the icebox.
- Explain that room contains many devices that made Trail End a good place to work. Examples of modern technology include dumbwaiter, laundry chute, German silver sink with running water, electric lights, and icebox.
- Discuss importance of refrigeration; what life was like before freezers, supermarkets and microwaves.

## **DINING ROOM**

- From north vestibule, point out hand-painted canvas ceiling and wall panels, pocket doors and size of the dining table (seats 24 when fully extended).
- Discuss popularity of buffet-style meals; didn't have to have a lot of staff because guests helped themselves to food placed in dishes on the sideboards.

## **VAULT**

- Before leaving area, explain that vault behind locked door was used to store silver, crystal and jewelry as well as papers and documents.
- Not used for money: Kendricks did his banking in town like everyone else; in fact, he started one of Sheridan's first banks.
- Currently used to store photographs and documents; students cannot go inside.

## **BASEMENT LAUNDRY ROOM**

- Double back and exit through kitchen; head left down hallway to basement stairs; ask students to use handrail as stairs are very steep.
- At bottom of stairs, make hairpin turn to the right and head toward laundry room at end of hall. Note exit point for laundry chute along the way.
- Point out motor for stationary vacuum cleaning system.
- Point out diorama of OW Ranch, where Kendrick family lived for eighteen years before moving to Sheridan.
- Segue to laundry room exhibits by discussing how hard housework would have been on an isolated ranch with no electricity or running water. Use exhibit behind diorama to illustrate difficulties.
- Point out laundry room conveniences such as triple sinks with wringers, electric iron, mangle (ironing machine), etc.
- Note that family purchased an electric washer, but never owned an electric dryer; always hung clothes up to dry, either on wires near ceiling or in back yard.

## **EXIT BUILDING**

- If the weather is bad and no grounds tour is possible, go back up stairs to foyer; tour is over; group exits through front door.
- If weather is good, go out basement door, up exterior stairs, and head clockwise around grounds.

## **GROUND**

- From near top of exterior stairs, point out drying yard in center of circular drive where family clothes were hung to dry.
- Point out carriage house courtyard; explain how Kendricks lived in carriage house while main house was being built; later used as garage for automobiles; horse stalls housed riding horses; now home to Carriage House Theatre.
- Note that Trail End was first professionally landscaped private property in the State of Wyoming.
- Head clockwise; point out Blue Spruce trees used as windbreak.
- Head down driveway toward east lawn; note that trees at northeast corner of property were used to block out undesirable views (junior high school)
- In center of main circular drive, look away from house and point out how tall trees were used to frame view of eastern hills.
- Facing house, point out curvilinear gables, balconies, and symmetrical facade; talk about building materials (stone, brick, wood, metal, glass, etc; no plastic).
- Head south toward sunken garden; point out framed view of Bighorn Mountains.
- Point out sundial; explain how it works (keep kids from climbing on it).

## **CONCLUSION**

- Ask if there are any final questions.
- Return to bus.

# LARGE GROUP TOURS

Most school tours are comprised of more than nine people. Therefore, we have implemented the use of six simultaneous, finely-tuned, well-timed tour groups, starting in six different places:

- Library
- Second Floor
- Third Floor
- Kitchen
- Basement
- Grounds

## NUMBER OF GROUPS

- If there are six groups, start one in each location
- If there are five groups, start one everywhere but the basement
- If there are four groups, start one everywhere but the basement and second floor
- If there are three groups, start one in the library, one on the third floor and one on the grounds
- If there are two groups, start one in the library and one on the third floor.

## HOW IT WORKS

- Six different groups start at six different places on the property.
- Groups will spend approximately ten minutes in each area. Use the following notes for ideas on what topics to address. Make sure to cover technology issues wherever possible.
- If another tour group comes up on you, conclude your remarks for that area and move on to the next.

## INTRODUCTION

- Brief introductory information will be given by staff either outside near the main entrance or in foyer.
- Information will include a welcome, basic info on family members, house construction, etc.
- There should be at least one other adult with each tour group.

## STARTING IN THE LIBRARY

### Go into building through south door

- Library, drawing, powder, cloak, foyer
- Entertaining; types of entertainment

### Go up main stairs to second floor

- Family bedrooms, closet, vacuum; gallery wall
- Family members; education; photos

### Go up main stairs to third floor

- Ballroom, loft, servants' quarters
- Music; staff; technology

### Go down back stairs to kitchen

- Kitchen, butlers' pantry, dining room
- Food preservation; preparation

### Go down back stairs to laundry room

- Vacuum motor; diorama; ranch/laundry vignettes
- Housework; changes to laundry

### Go out basement door; clockwise around grounds

- Drying yard; carriage house
- Landscaping, carriage house; house symmetry.

### Conclude tour; go to bus

## STARTING ON THE SECOND FLOOR

### Go in front door, up main stairs to second floor

- Family bedrooms, closet, vacuum; gallery wall
- Family members; education; photos

### Go up main stairs to third floor

- Ballroom, loft, servants' quarters
- Music; staff; technology

### Go down back stairs to kitchen

- Kitchen, butlers' pantry, dining room
- Food preservation; preparation

### Go down back stairs to laundry room

- Vacuum; diorama; ranch and laundry vignettes
- Housework; changes to laundry

### Go out basement door; clockwise around grounds

- Drying yard; carriage house
- Landscaping, carriage house; house symmetry.

### Go into building through south door

- Library, drawing, powder, cloak, foyer
- Entertaining; types of entertainment

### Conclude tour; outside through front door

## **STARTING ON THE THIRD FLOOR**

### **Go in front door, up main stairs to third floor**

- Ballroom, musicians' loft, servants' quarters
- Staff; technology

### **Go down back stairs to kitchen**

- Kitchen, pantry, dining room
- Food preservation; preparation

### **Go down back stairs to laundry room**

- Vacuum; diorama; ranch and laundry vignettes
- Housework; changes to laundry

### **Go out basement door; clockwise around grounds**

- Drying yard; carriage house
- Landscaping, carriage house; house symmetry.

### **Go into building through south door**

- Library, drawing, powder, cloak, foyer
- Entertaining; types of entertainment

### **Go up main stairs to second floor**

- Family bedrooms, closet, vacuum; gallery wall
- Family members; education; photos

### **Conclude tour; go down main stairs; outside**

## **STARTING IN THE KITCHEN**

### **Go in main entrance, through foyer to kitchen**

- Kitchen, butlers' pantry, dining room
- Food preservation; preparation

### **Go down back stairs to laundry room**

- Vacuum; diorama; ranch and laundry vignettes
- Housework; changes to laundry

### **Go out basement door; clockwise around grounds**

- Drying yard; carriage house
- Landscaping, carriage house; house symmetry.

### **Go into building through south door**

- Library, drawing, powder, cloak, foyer
- Entertaining; types of entertainment

### **Go up main stairs to second floor**

- Family bedrooms, closet, vacuum; gallery wall
- Family members; education; photos

### **Go up main stairs to third floor**

- Ballroom, musicians' loft, servants' quarters
- Staff; technology

### **Conclude tour; go down main stairs; outside**

## **STARTING IN THE BASEMENT**

### **Go in main entrance, through foyer to basement stairs; down to basement laundry room**

- Vacuum; diorama; ranch/laundry vignettes
- Housework; changes to laundry

### **Go out basement door; clockwise around grounds**

- Drying yard; carriage house
- Landscaping, carriage house; house symmetry.

### **Go into building through south door**

- Library, drawing, powder, cloak, foyer
- Entertaining; types of entertainment

### **Go up main stairs to second floor**

- Family bedrooms, closet, vacuum; gallery wall
- Family members; education; photos

### **Go up main stairs to third floor**

- Ballroom, musicians' loft, servants' quarters
- Staff; technology

### **Go down back stairs to kitchen**

- Kitchen, butlers' pantry, dining room
- Food preservation; preparation

### **Conclude tour; go out through front door**

## **STARTING ON THE GROUNDS**

### **Start outside; head clockwise around grounds**

- Drying yard; carriage house
- Landscaping, carriage house; house symmetry.

### **Go into building through south door**

- Library, drawing, powder, cloak, foyer
- Entertaining; types of entertainment

### **Go up main stairs to second floor**

- Family bedrooms, closet, vacuum; gallery wall
- Family members; education; photos

### **Go up main stairs to third floor**

- Ballroom, musicians' loft, servants' quarters
- Staff; technology

### **Go down back stairs to kitchen**

- Kitchen, butlers' pantry, dining room
- Food preservation; preparation

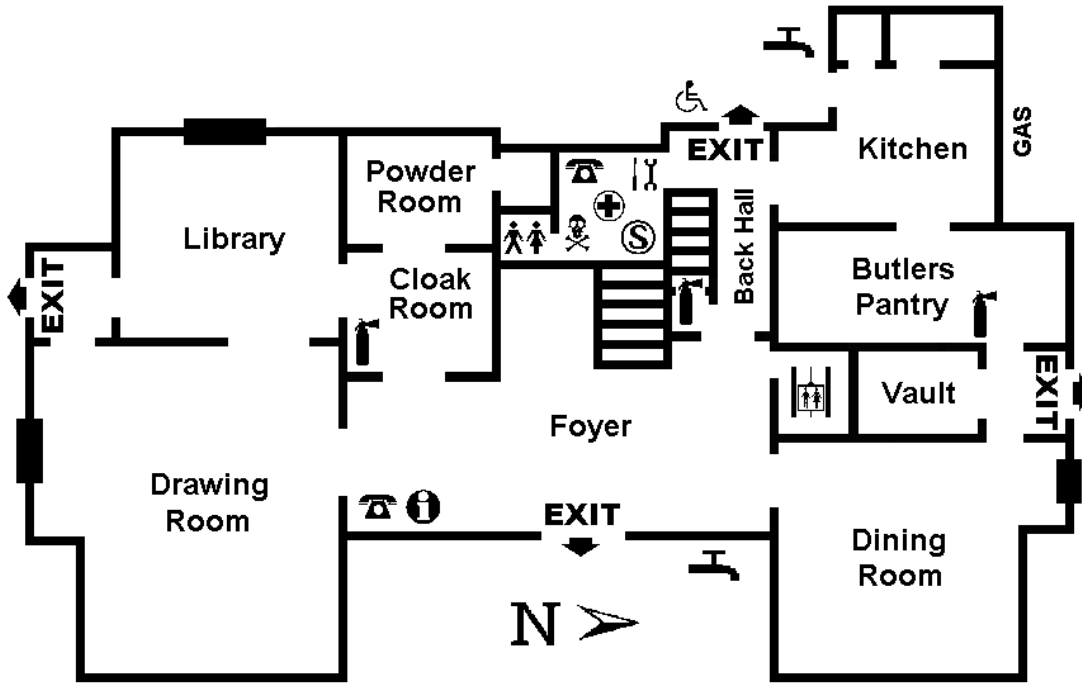
### **Go down back stairs to laundry room**

- Vacuum; diorama; ranch/laundry vignettes
- Housework; changes to laundry

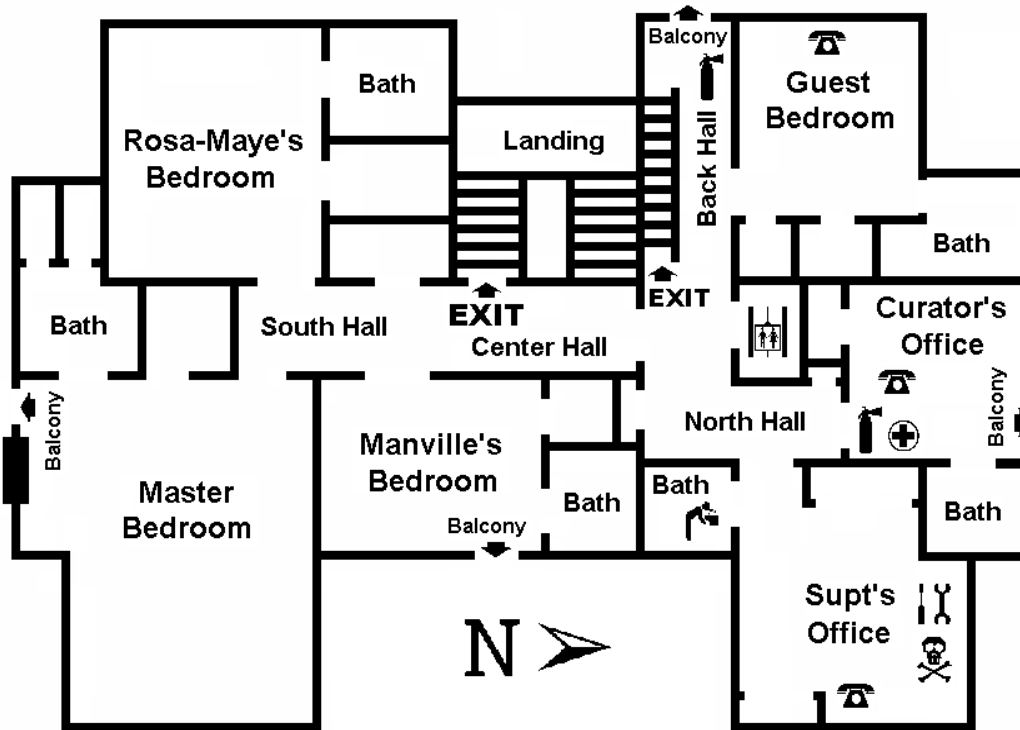
### **Conclude tour; go out through basement door**

# Maps & Diagrams

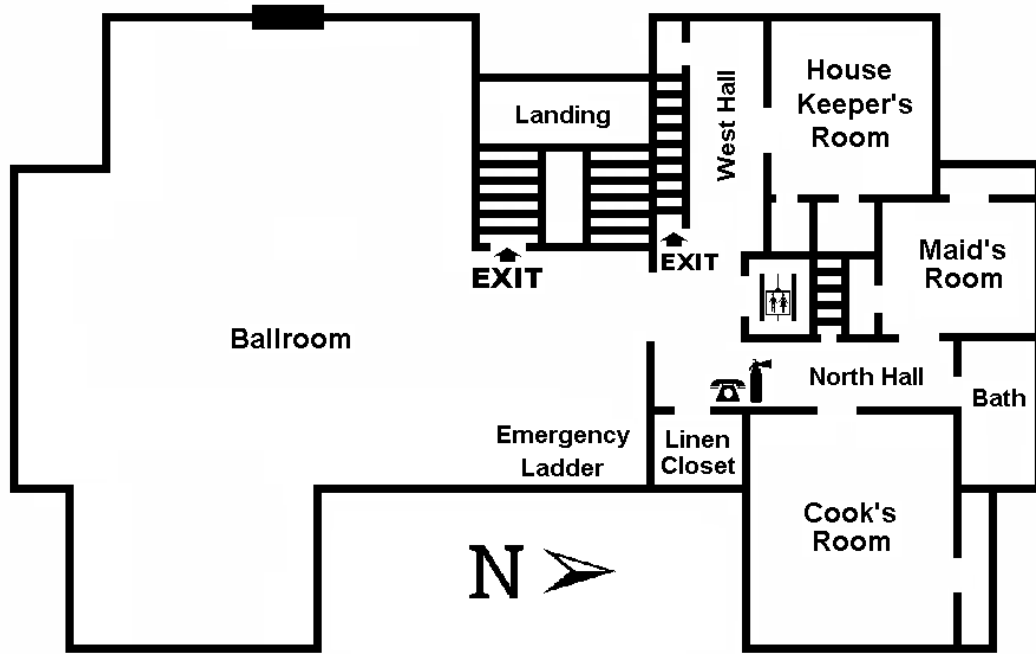
## First Floor



## Second Floor



### Third Floor



### Grounds

